



SUPERIOR PAVING PRODUCT

## WORLD'S STRONGEST PERMEABLE PAVERS



NEW PRODUCTS | 2018

READ MORE ON PAGE 7



COST SAVINGS

**LAND & PER SQUARE  
FOOT SAVINGS**



100% PERVIOUS COVER

**DRIVE ON SURFACE,  
WATER STORAGE BELOW**



GRAVEL FILL



GRASS FILL

## A DESIGN...

The beauty and **simplicity** of a basic LEGO® brick has always wowed me. The fit. The **strength**. Have you ever seen one break? The versatility. Six eight-stud LEGO bricks (2x4) can be put together in 915,103,765 ways! Whatever one can imagine one can build!

With TRUEGRID®, I aspired to design a LEGO paver for the real world, more precisely a permeable one. Strength, simplicity and **modular** versatility are the legs to the grid's design. The TRUEGRID® paver is a simple, permeable paving building block for the **real** world.

## ...DRIVEN BY PURPOSE.

Five years ago my hero, my nine year old son Hudson, battled and survived cancer. His younger brother, my other hero and son, was born 10 weeks before his brother's diagnosis. These events shaped the course of my life.

We have a **clarity of purpose** for our business: to challenge conventional thinking and disrupt traditional paving methods; to ultimately create a better, cleaner, less toxic environment for our kids. By offering a simple new green technology that is easily actionable, together we can make an **impact** now. Less flooding. Cleaner air and water. Less heat. Less thermal pollution. Less waste in the landfill. Fewer toxins from runoff pollutants as well coal tar & asphalt. A more natural landscape.

We are very fortunate. My kids are healthy and we get to do what we love with a deep sense of purpose. Last week I myself became a one-year cancer survivor. Our team greets each day with passion, purpose and joy for our mission. Call us and you'll see. The **TRUEGRID® movement is underway**. Thank you for joining us in building a better tomorrow...now.

Barry Stiles  
Founder & CEO

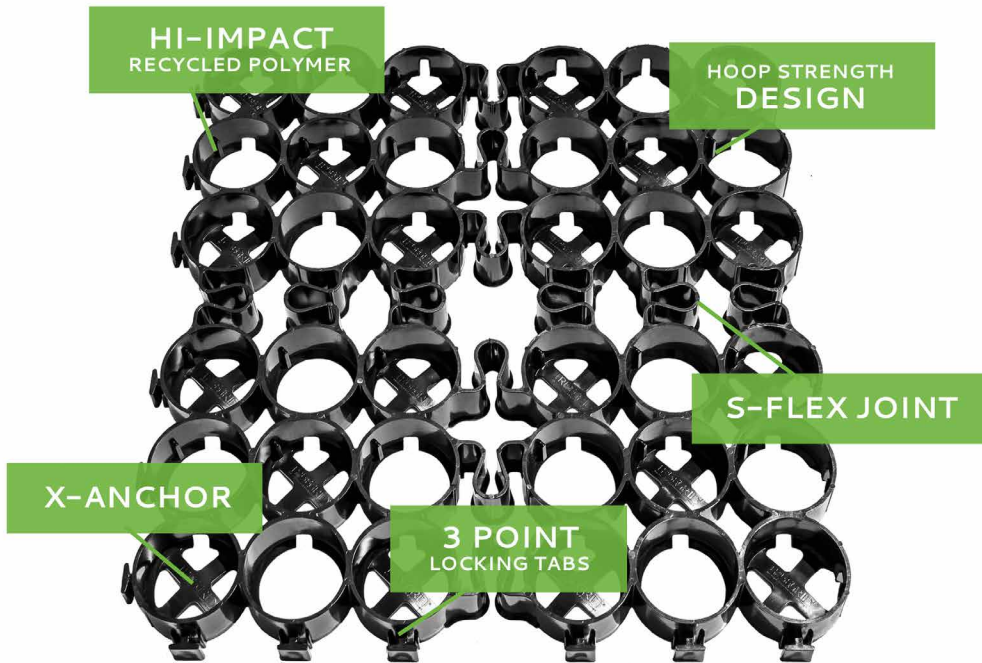
[WWW.TRUEGRIDPAVER.COM](http://WWW.TRUEGRIDPAVER.COM)

>ABOUT



# DESIGN FEATURES

---



U.S. Patent No. 8,734,049

---

The robust cells allow our 2 lb grid to handle over 1 million lbs per square foot load! No gravel migration, compaction or dust. **100% permeability.** The grid can be pressed together by hand, no tools, no clips. With the integral X-anchors, no staking is needed. A bottom flange prevents sinking. Other systems are either too flexible & weak & can't handle trucks or traffic; or too rigid because soils move and paving cracks! The S-Flex Joints solve these problems giving our grid the best of both. A versatile design for any climate or soil or weight or traffic load.

## INDEX

Products  
Green  
Competition  
Architects  
Developers  
Engineers  
City Professionals  
Contractors  
Projects

## PAGE

4-9  
10  
11  
12  
13  
14-15  
16  
17  
18-23

# PRODUCTS

WWW.TRUEGRIDPAVER.COM

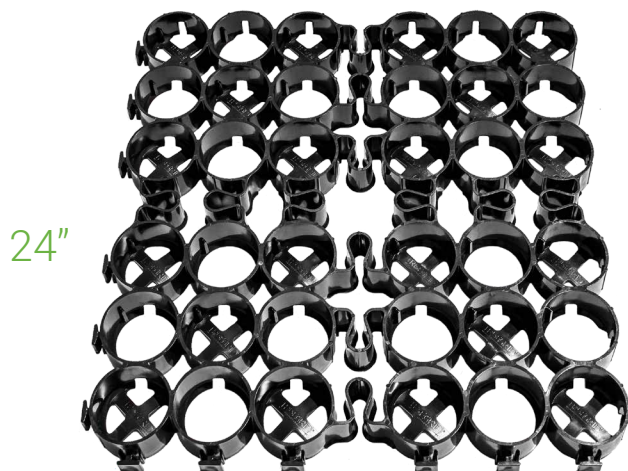
>PRODUCTS

>TRUEGRID-PRO-PLUS



## TRUEGRID® PRO PLUS

THE COMMERCIAL PAVER



- Works with SuperSpot® Parking Markers
- Superior Patented Design
- Engineered for Heavy Loads & Heavy Traffic
- Industry-Best Strength.
- Industrial or Commercial Applications
- H20, HS20 Rated

### SPECIFICATIONS:

- Dimensions: 24"x 24" x 1.8" (4 sf)
- Pre-Assembled: 16 sf per layer (4'x4' sheet of 4 grids)
- Compression Strength: 9510 psi filled.
- Permeability: 100%
- Material: 100% Post-Consumer Recycled HDPE
- Color: Black with UV Stabilizer

### MORE:

- No Staking or Clips
- Works in All Climates & Soils
- May be Saw Cut



SUPERSPOT® AVAILABLE

### COMMERCIAL APPLICATIONS:

- Parking Lots
- Equipment & Truck Yards
- Storage Lots
- Drive Lanes
- Roadways
- Firelanes
- Rig Sites
- Event Parking

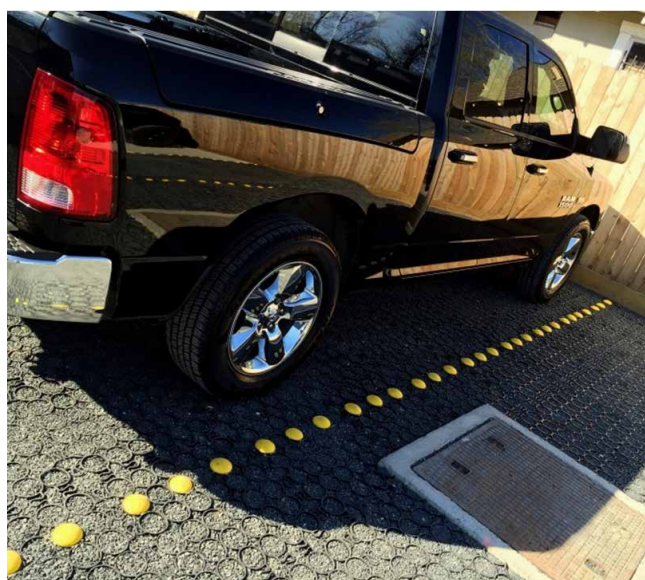


WWW.TRUEGRIDPAVER.COM

> GET A QUOTE







## SuperSpot® for TRUEGRID® PRO PLUS

- Maintenance-Free Parking Markers
- Delineate Parking for Max Efficiency
- Create Arrows & Traffic Flow Markers
- High Visibility Profile
- Heavy Loads, Heavy Traffic
- Easy Snap-Lock Installation
- Never Stripe Again

### SPECIFICATIONS:

- Support Ribs for Strength
- 0.90" Domed Profile
- UV Stabilized

[WWW.TRUEGRIDPAVER.COM](http://WWW.TRUEGRIDPAVER.COM)

>PRODUCTS

>SUPERSPOTS



# PRODUCTS

WWW.TRUEGRIDPAVER.COM

>PRODUCTS

>TRUEGRID-ECO



## TRUEGRID® ECO

THE RESIDENTIAL PAVER



24"

1"



- Superior Patented Design
- Excellent Compression Strength. Best-in-class.
- Low traffic applications
- H20, HS20 Rated

### SPECIFICATIONS:

- Dimensions: 24"x 24" x 1.0" (4 sf)
- Pre-Assembled: 16 sf per layer (4'x4' sheet of 4 grids)
- Compression Strength: 6200 psi filled.
- Permeability: 100%
- Material: 100% Post-Consumer Recycled HDPE
- Color: Black with UV Stabilizer  
Other Colors Available

### MORE:

- No Staking or Clips
- Works in All Climates & Soils
- May be Saw Cut
- Grass or Gravel Fill
- High Heel Friendly



SUPERSPOT® AVAILABLE

### APPLICATIONS:

- Driveways
- Parking lots
- Event Parking
- Firelanes
- Grass Overflow Parking
- Community Green-Space
- Golf Cart Paths
- Walk/Bike Trails
- Pathways



WWW.TRUEGRIDPAVER.COM

> GET A QUOTE



WWW.TRUEGRIDPAVER.COM

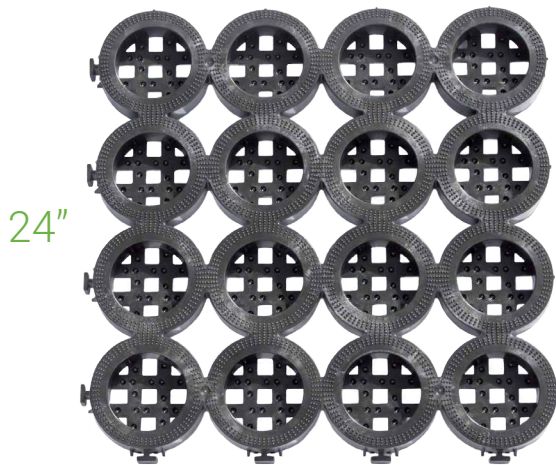
> PRODUCTS

> MACK



## TRUEGRID® MACK® NEW PRODUCT

THE INDUSTRIAL PAVER



1.5"



EARTH GRABBING TEETH



- Double Wall I-Beam Construction
- Unique Patented Design
- Gridlock™ positive locks
- Earth grabbing teeth for torque strength
- Gripping traction tread surface
- 100% effective permeability
- Deep Cells for Gravel Containment

### SPECIFICATIONS:

- Dimensions: 24"x 24" x 1.5" (4 sf)
- Pre-Assembled: 16 sf (4'x4') Sheets (4 grids per sheet)
- Permeability: 100%
- Material: 100% Post-Consumer Recycled HDPE
- Color: Black with UV Stabilizer

### MORE:

- No Staking or Clips
- Works in All Climates & Soils
- May be Saw Cut
- 20 + Year, Virtually Maintenance Free Life

**SUPERSPOT® AVAILABLE**



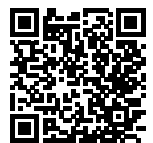
### APPLICATIONS:

- Roadways
- Construction Site Access
- Truck terminals & sites
- Heavy Traffic Drive lanes
- Military
- Extreme Applications
- Dust Control
- Service Roads



WWW.TRUEGRIDPAVER.COM

> GET A QUOTE



# ACCESSORIES

WWW.TRUEGRIDPAVER.COM

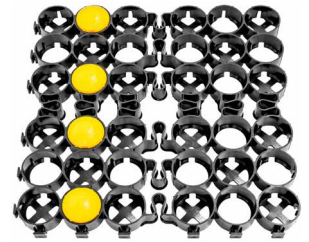
>PRODUCTS



## SuperSpots®

### MAINTENANCE-FREE PARKING DELINEATORS

Delineate your parking spots with easy-to-pop-in SuperSpot parking markers. No-restripping. Long-term UV resistance. Multiple color options for standard parking, fire lanes, handicapped designated spaces. Highly visible.



### PRO PLUS



### ECO



### MACK™



## THE PLATE™

### EASY-TO-USE PARKING SPOT IDENTIFIER FOR PRO PLUS

Identify your spaces with easy-to-pop-in PLATE markers. Long-term UV resistance. Multiple color options for standard signs. Highly visible.

Patent Pending



7.5"





# ACCESSORIES

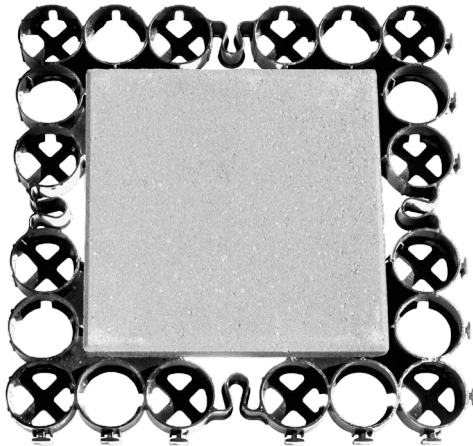
WWW.TRUEGRIDPAVER.COM

>PRODUCTS

>DECO



## TRUEGRID® DECO™



A modular décor element, the TRUEGRID® DECO™ adds functional nuance to your design. Use square, round or irregular shaped step stones to build walkways, ribbon driveways or any stepping area to add character to your project. Use DECO™ alone or attach to the TRUEGRID® PRO PLUS™ paving system to create unique projects that are not only pleasing to the eye but sustainable.

### FEATURES:

- Fits most 16" x 16" x 2" or smaller stone pavers
- 100% Post-Consumer Recycled HDPE
- Fits square, round or any irregular shaped stones
- Connects with TRUEGRID PRO PLUS
- Border cells allow for gravel or grass fill
- Drain through and detain under grid
- Stone paver not included



### SPECIFICATIONS:

- |                  |   |
|------------------|---|
| · Dimensions:    | 24"x 24" x 1.8" (4 sf)                                  |
| · Pre-Assembled: | 16 sf (4'x4') sheets (4 grids per sheet)                |
| · Permeability:  | 100%  |
| · Material:      | Recycled High Density Polyethylene (100% post-consumer) |
| · Color:         | Black with UV Stabilizer                                |

### APPLICATIONS:

- Walkways
- Driveways
- Poolside
- Garden Paths
- Light Commercial Parking
- Dog park paths
- Common areas walks
- Patios

# GREEN

WWW.TRUEGRIDPAVER.COM

>RESOURCES

>ENVIRONMENT



TRUEGRID® is Eco-friendly from manufacture to end use.



Made from 100% post-consumer recycled HDPE.

100% Permeable. Up to 100% of runoff water pollutants are removed via bioremediation.

## Impact Scorecard

MEASURE THE DIFFERENCE



150K<sup>SF</sup>  
600 Car Lot

CO<sub>2</sub> SAVED

967<sup>TONS</sup>



PLASTIC RECYCLED

204K<sup>LBS.</sup>



STORMWATER DETAINED

40K<sup>CUBIC FT</sup>



## LEED Credit Opportunities With TRUEGRID®



STORMWATER  
MANAGEMENT



RECYCLED  
CONTENT



INNOVATION  
& DESIGN



MATERIALS  
& RESOURCES

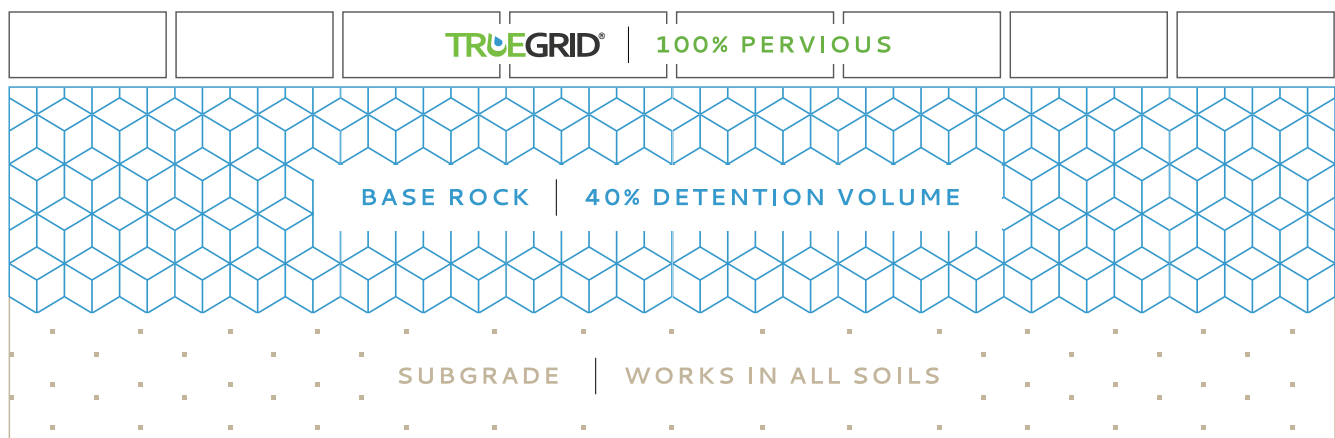
Tons of CO<sub>2</sub> emissions from the manufacturing of cement are eliminated. Millions of lbs of plastic are kept out of landfill and recycled from a consumable to a 60 year life cycle useful product. Detention is added and flooding from stormwater is reduced. Coal tar & asphalt toxins are eliminated.

“ We do not inherit the earth from our ancestors; we borrow it from our children.”

Unknown Native American Quote

# COMPETITION COMPARISON

SPECIFICATION	TRUEGRID	ROLL-OUT PLASTIC PAVERS	CONCRETE PAVERS
Strength (filled)	9510 psi	5730 psi	5000
Flexural Strength	High	None (rolled paver)	High
Weight (lbs/sf)	1.32	0.42	37
Tensile Strength	2852 lbs	458 lbs	NA
Fill rock size	Up to 1"	Up to 3/8"	NA
Staking	<b>Not Required</b>	Required	NA
Installation	1000 sf/hr	NA	Slow
Recycled content	100% post consumer	100%	0
Porosity	90%	90%	37%
Wall thickness	<b>.250"/.150"</b>	.104"	NA
Paver depth	1.8"	1.0"	2"
Cell Size (ID)	3.2"	2.15"	NA
Flexibility	Rigid w/ Flex joints	Flexible	Rigid
Adjoining cell walls	<b>Yes</b>	No	No
Flex joints	<b>Yes</b>	No	No
Joint type	Tab	Snap	None
Shear Transfer Strength	High	Low	None



# ARCHITECTS

WWW.TRUEGRIDPAVER.COM

>RESOURCES

>PROFESSIONALS



“Man is a phase of nature, and only as he is related to nature does he matter, does he have any account whatever above the dust.”

Frank Lloyd Wright

Endless Gravel Fill Options:



- Beauty
- Performance
- Sustainability

Achieve harmony & balance development with nature. Gain space for inspired functionality & green, creative livability. Retain & reuse stormwater onsite. Natural, upscale aesthetic. ADA compliance. Design with TRUEGRID®.

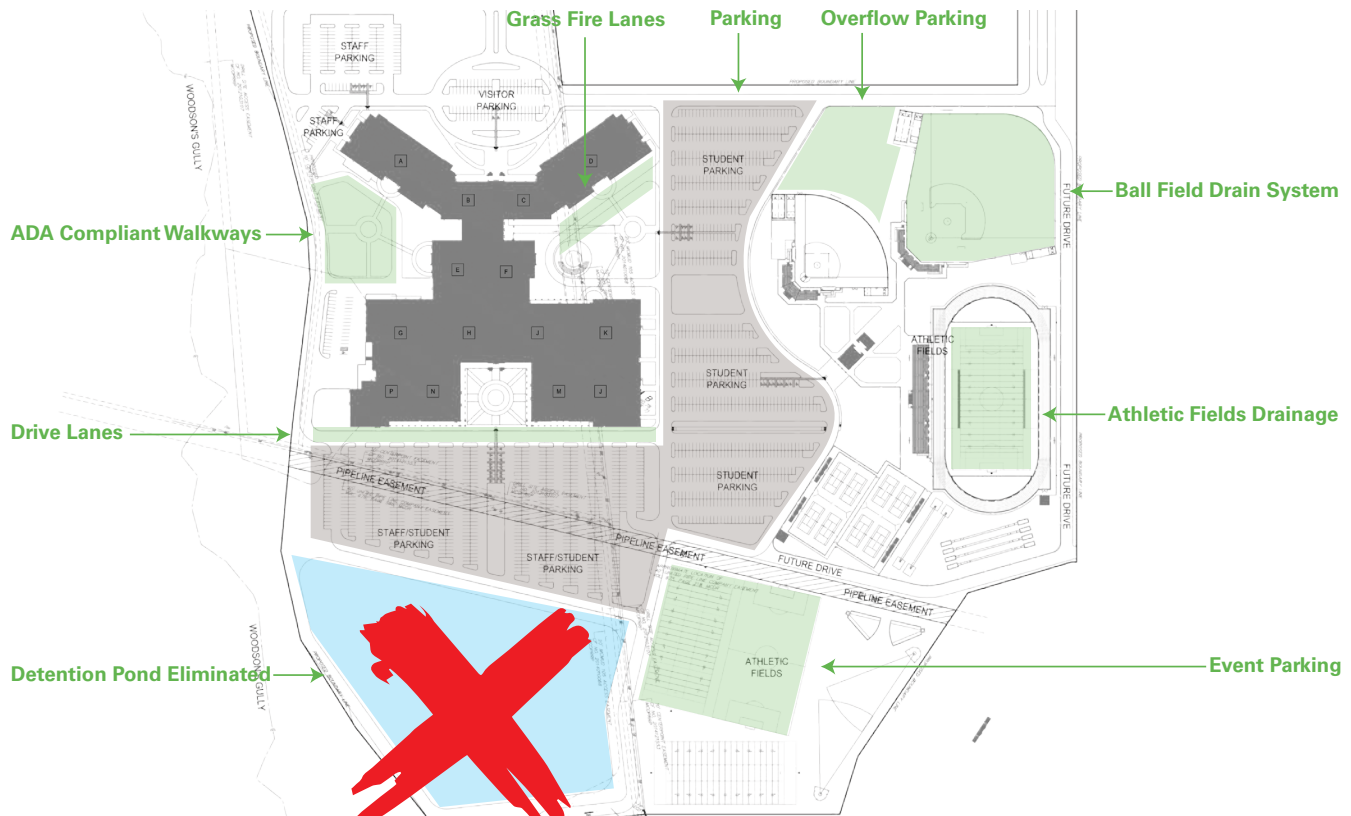


# DEVELOPERS

WWW.TRUEGRIDPAVER.COM

>RESOURCES

>PROFESSIONALS



- 100% Land Utilization
- Durable & Pervious Cover
- Dollars

Save land & eliminate or reduce detention ponds. Drive on surface with detention under your parking lot. Maintenance-free 25 to 60 year life. Heavy traffic, heavy loads. TRUEGRID® counts as 100% pervious cover. Construction costs up to 30% less than concrete. Sustainable, upscale natural aesthetic. LEED eligible. Build with TRUEGRID®.



“Buy land, they’re not making it anymore.”

Mark Twain

# ENGINEERS

WWW.TRUEGRIDPAVER.COM

>RESOURCES

>PROFESSIONALS



- Detention
- Durability
- Dollars

“ Some people don’t like change, but you need to embrace change if the alternative is disaster.”

Elon Musk

Control flooding and manage stormwater. Best-in-class, engineered strength, structure & soil stabilization with TRUEGRID®. Heavy traffic, heavy loads. H20, HS20 rated. 25+ year life. Save on construction costs (up to 50%) and land. Specify TRUEGRID®.



# WORKS IN ALL CLIMATES AND SOILS

## STORM WATER DETENTION



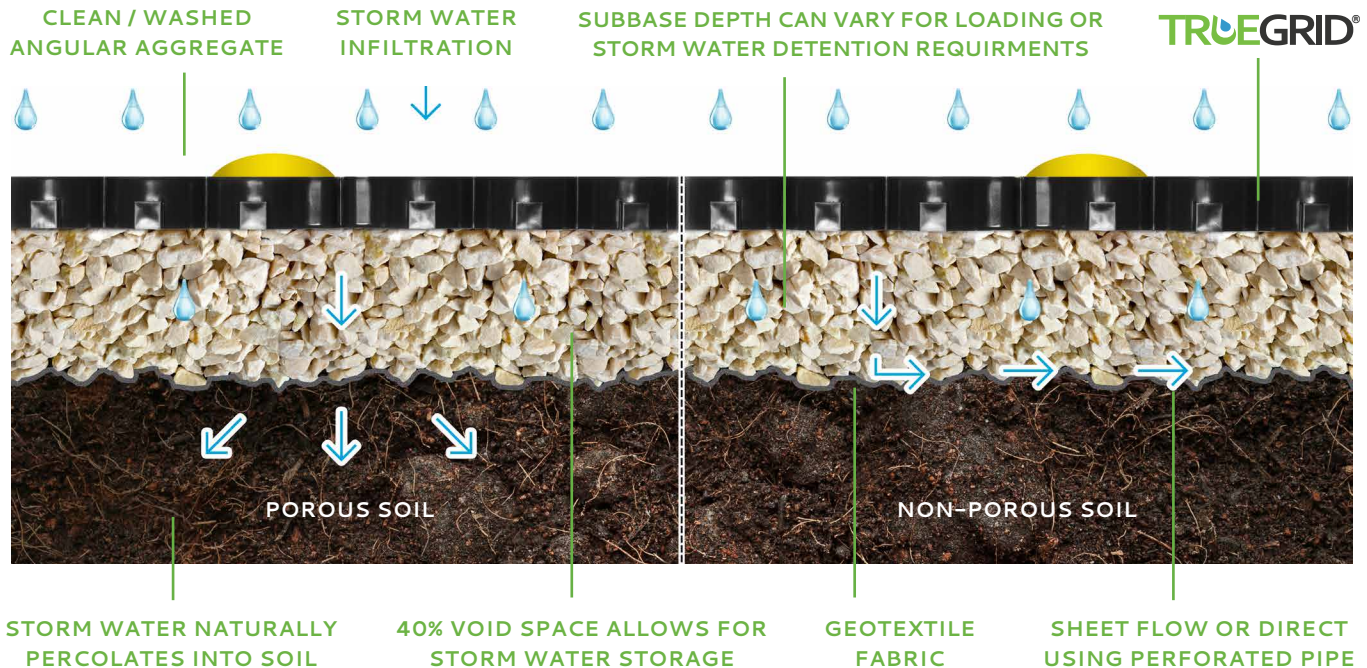
**100% PVIOUS  
COVER**



**800+ INCHES/HOUR  
INFILTRATION RATE**



**0.0 - 0.05 RUNOFF  
COEFFICIENT**



## HOW TO CALCULATE STORM WATER DETENTION CAPACITY

Detention Capacity = TRUEGRID Area (A) x Total Aggregate  
Depth (d) x 40% Void Space =  $A \times d \times 0.40$

**WHERE:**  
d = Depth of Subbase + TRUEGRID Height

### EXAMPLE:

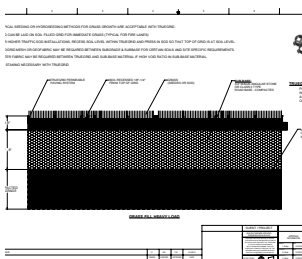
1 Acre Lot, TRUEGRID PRO PLUS, 8in Sub Base  
Fill & Sub Base - 3/4" Clean/Washed Angular Stone  
Detention Capacity =  $A \times d \times 0.40$

### WHERE:

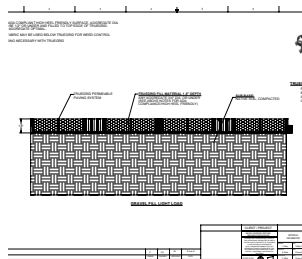
A = 1 Acre = 43,560 sf  
d = 8 in + 1.8 in = 9.8 in = 0.8 ft  
Detention Capacity =  $43,560 \times 0.8 \times 0.4 = 13,939$  cf

Go to TECHNICAL INFO on [TRUEGRIDpaver.com](http://TRUEGRIDpaver.com) for typicals. Call for site specific questions: 1-855-355-GRID (4743)

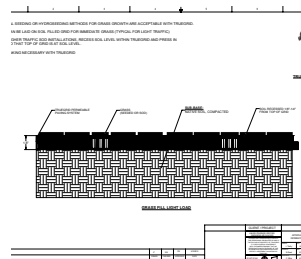
### 1. Grass Fill Heavy Load



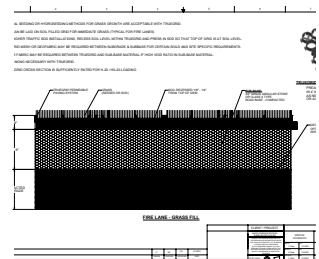
### 2. Gravel Fill Light Load



### 3. Grass Fill Light Load



### 4. Fire Lane





- Stormwater Management
- Urban Heat Island (UHI) Reduction
- Functional Green-Space

Reduce flooding and manage stormwater with TRUEGRID®. Added detention volume. 100% pervious cover. Improved water quality & more parking. Cooler than asphalt or concrete. No gravel migration. Key tool in federal (EPA), state, county and city LID (Low Impact Development) guidelines and BMP's. Code with TRUEGRID®.

## 1. Stormwater Detention Underneath



FLODOT Underpass Project

## 2. Drive on Durable Surface





# CONTRACTORS

WWW.TRUEGRIDPAVER.COM

>RESOURCES

>PROFESSIONALS



- Advantageous Price & Service Differentiator
- Eco-Friendly Offering
- Easy-to-Install

Gain a cost and speed advantage over conventional paving. Differentiate from competitors as a preferred TRUEGRID® installer with a green, pervious, coded, less expensive paving system. Pave with TRUEGRID®.

## 1. Grade the site



## 2. Lay, compact base



## 3. Drop the grid



## 4. Fill the grid



# PROJECTS

[WWW.TRUEGRIDPAVER.COM](http://WWW.TRUEGRIDPAVER.COM)

>RESOURCES

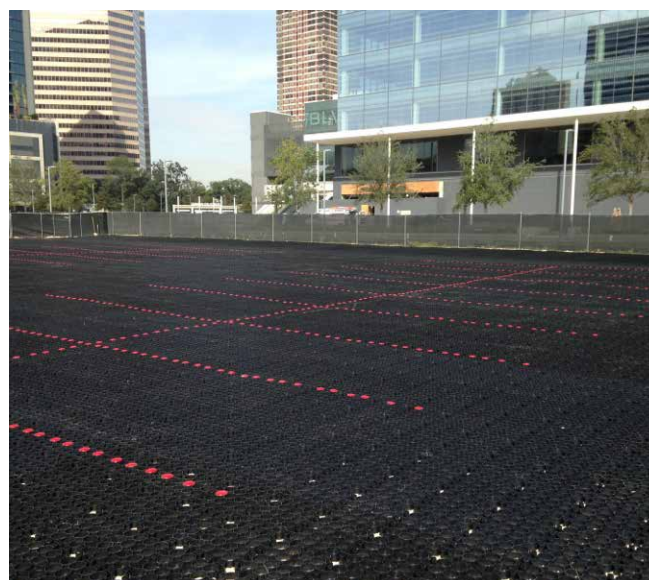
>PROJECTS



## Whole Foods Market®

"Great product. Went in quick. Our ADA compliant lot was down in time for the holidays."

**John Fox (Construction Supervisor)**







## Google®

### FACT

TRUEGRID was tested and chosen over all other paving options by site engineers for Google at the Mountain View campus. Eco-friendly, durable and 100% permeable.



## Pocono Raceway®—NASCAR®

"The new installed walkways were a huge success with our fans. The ease of installation and maintenance... we intend to once again use TRUEGRID® Pavers throughout. It's a great product and fits in with our sustainability efforts."

**Brandon Igdalsky – CEO**

# PROJECTS

[WWW.TRUEGRIDPAVER.COM](http://WWW.TRUEGRIDPAVER.COM)

>RESOURCES

>PROJECTS



## Fire Lane

"We've completed all the tests. As far as supporting the truck as a driving material, we didn't have any issues there. When we set the outriggers up, in a normal operation with the pads underneath the outrigger, we were able to take the truck to its extreme test with all the weight all on one side. So that test was a success. We then took the outriggers without the pads and to increase the concentrated load on the system. It even supported those."

### Fire Chief McCaskill



## Self-Storage

"We got pervious cover credit for our entire lot and eliminated the entire 2.5 acre detention pond."

### Hank Daughtry – New Braunfels Self Storage



# TRUEGRID® CASE STUDY

## PARKING LOT EXPANSION

AutoNation® car dealership increases inventory lot space while saving almost half a million dollars.

### PROBLEM:

Design a solution that will allow AutoNation to expand its current car inventory lot without spending more money on land.

### CHALLENGES:

High cost for concrete, detention pond and drainage system cost, Maximize Land Utilization for Space Challenged Dealership, Stormwater detention requirements for site for flood prone areas.

### SOLUTION:

100 extra spaces is a grand slam to the dealership. The entire detention pond was eliminated with the 100% pervious TRUEGRID® system and by transferring all of the required stormwater detention volume into the base and the gravel filled grid. Rain infiltrates the surface at over 800 inches/hour and there is no runoff. SuperSpot® parking markers were used instead of striping paint for maintenance free striping.

## TRUEGRID® VS. CONCRETE

- |   |                              |                              |
|---|------------------------------|------------------------------|
| - Land Savings: 25,000 sq ft.             | - 100% Pervious Cover Credit | - 100 extra parking spaces   |
| - Contruction Cost Savings: \$480k        | - 100% Land Utilization      | gained on the 500 space lot. |
| - Elimination of seperate detention pond. | - Zero Runoff                |                              |



## ESTIMATED SAVINGS USING TRUEGRID

CONSTRUCTION COSTS  
(Sq Ft over entire site vs. concrete.)

\$360,000

DETENTION POND & DRAINAGE  
CONSTRUCTION SAVINGS

\$120,000

TOTAL SAVINGS

\$480,000

# PROJECTS

[WWW.TRUEGRIDPAVER.COM](http://WWW.TRUEGRIDPAVER.COM)

>RESOURCES

>PROJECTS



## U.S. Military

"They spec TRUEGRID® because of the its eco-friendliness as well as strength to handle anything."

**Chris Smith- Gilmore Environmental Consulting**



## Industrial

"Our trucks and equipment don't get stuck anymore when it rains. The grid keeps us working."

**David Bourgeois – (Purchasing Manager) Petrochem**





## PROJECTS

# SUPERBOWL LI® – CLUB NOMADIC® POP-UP NIGHT CLUB

---

- 62,500 sf parking lot installed in 10 days
- 3 story metal nightclub installed in 60 days
- 100% Land Use - TRUEGRID lot eliminated detention pond





"Design is not just what it looks like and  
feels like. Design is how it works."

STEVE JOBS



**TRUEGRID**® MADE  
True to your project. True to the environment.  U.S.A.

2500 Summer Street Ste 3225  
Houston, TX 77007  
© 2018



[TRUEGRIDPAVER.COM](http://TRUEGRIDPAVER.COM)

855-355-GRID